



Vail Valley Medical Center

Presentation of
Master Facility Plan Helipad

Vail Planning and Environmental Commission
October 27, 2014

Helicopter Transport Destinations

Denver Health Medical Center

Medical Center of Aurora

Rocky Mountain Hospital for Children

Children's Hospital

Swedish Medical Center



Vail Valley Medical Center

Helicopter Transfer Cases 2012-13

Heli Transfers OUT	2013 Total = 73	2012 Total = 72
Cardiac	27	24
Trauma	17	16
Acute Medical Emergency	16	14
Stroke (or similar)	8	7
Neonatal (newborn)	4	7
High-risk OB (mom & baby)	1	4

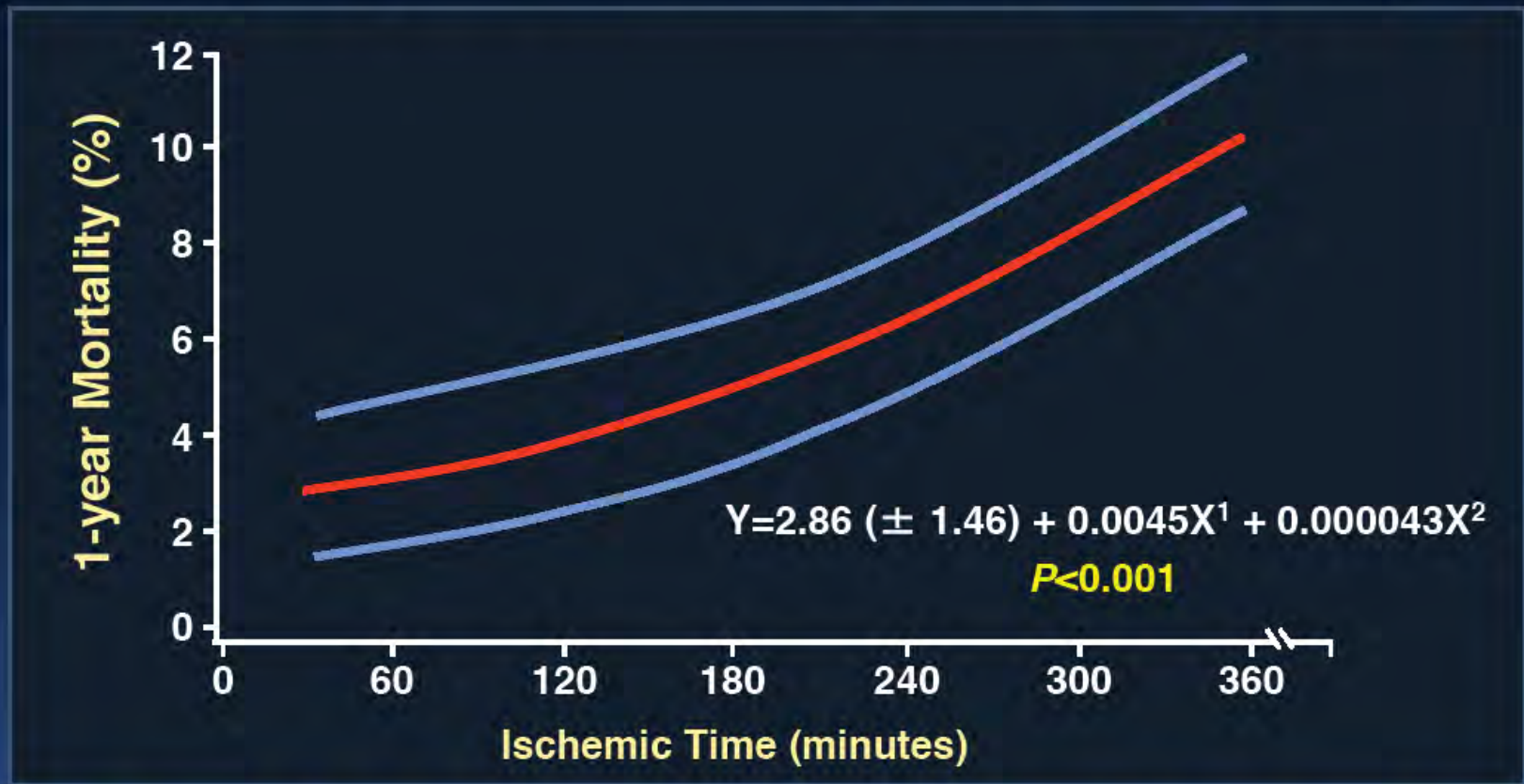
Helicopter Transfers 2013

Helicopter Transfers IN	3
Helicopter Transfers OUT	73
Ambulance Transfers OUT	271
Total Transfers OUT	344
% of Heli Transfers OUT	21%



Vail Valley Medical Center

Time from Symptom Onset to Treatment Predicts 1-year Mortality after Primary PCI



The relative risk of 1-year mortality increases by 7.5% for each 30-minute delay

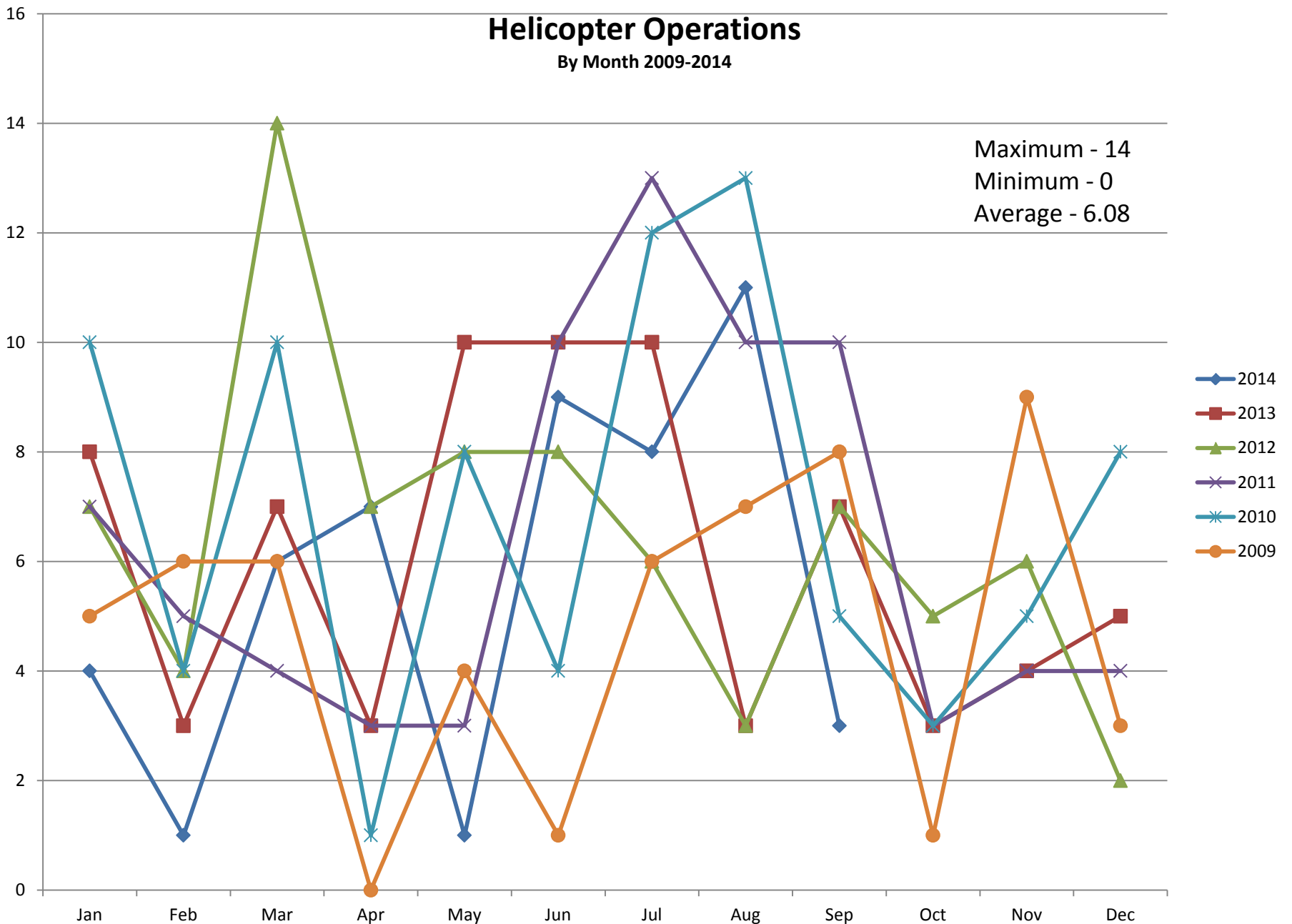


Vail Valley Medical Center

Helicopter Operations

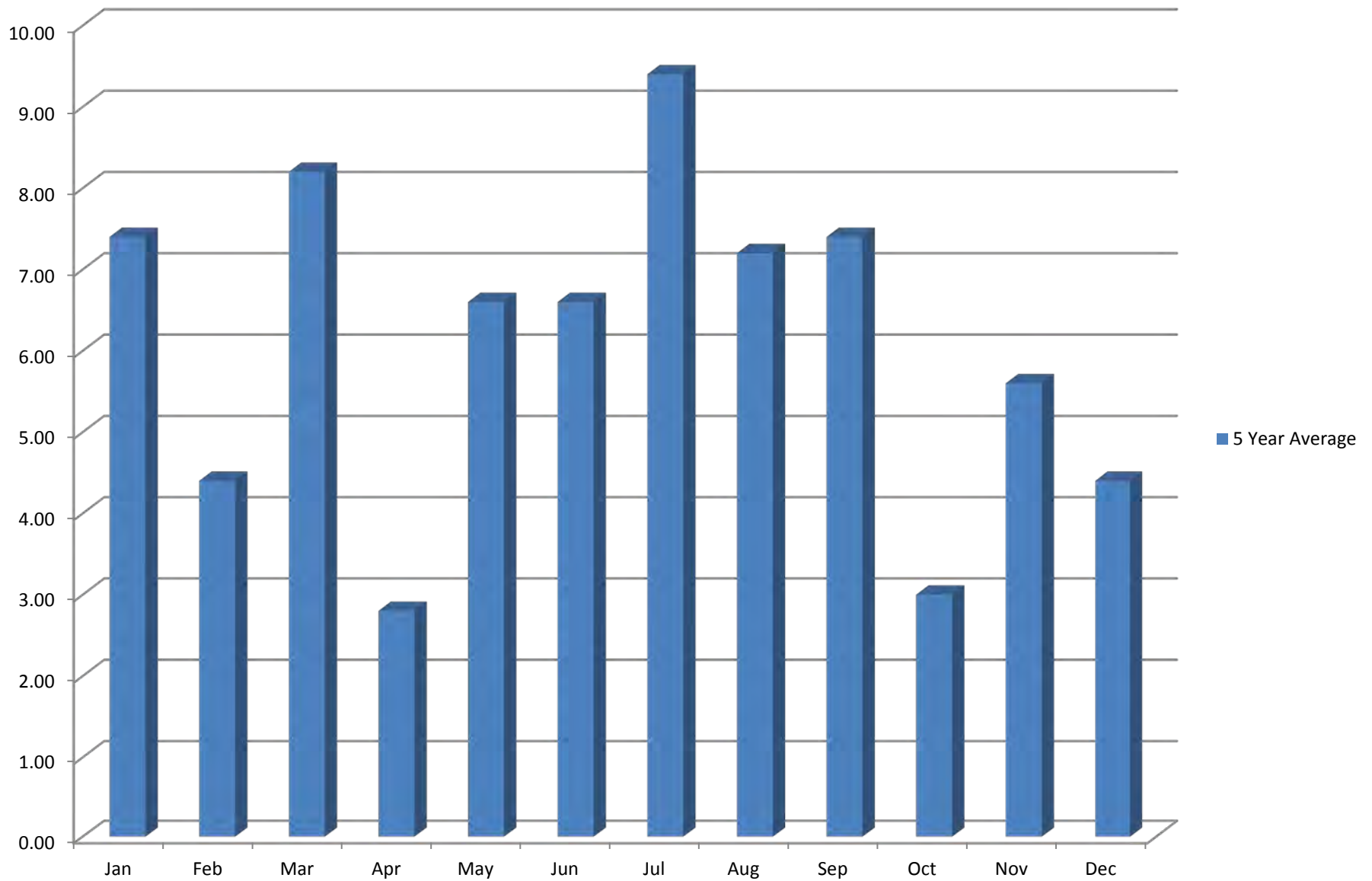
By Month 2009-2014

Maximum - 14
Minimum - 0
Average - 6.08



Helicopter Operations

5 Year Average









Chronology

- **Helicopter 5-50 minute ETA after physician makes decision.**
- **Ambulance assigned at 5 minute ETA and becomes unavailable.**
- **15-30 minutes landing logistics and getting flight crew to VVMC.**
- **20-60 minutes transfer of care in ED .**
OB/Neonates can be up to 2 hours
- **20-30 minutes takeoff logistics.**
60 minutes minimum ambulance out of service
Patient charge of around \$450



Vail Valley Medical Center

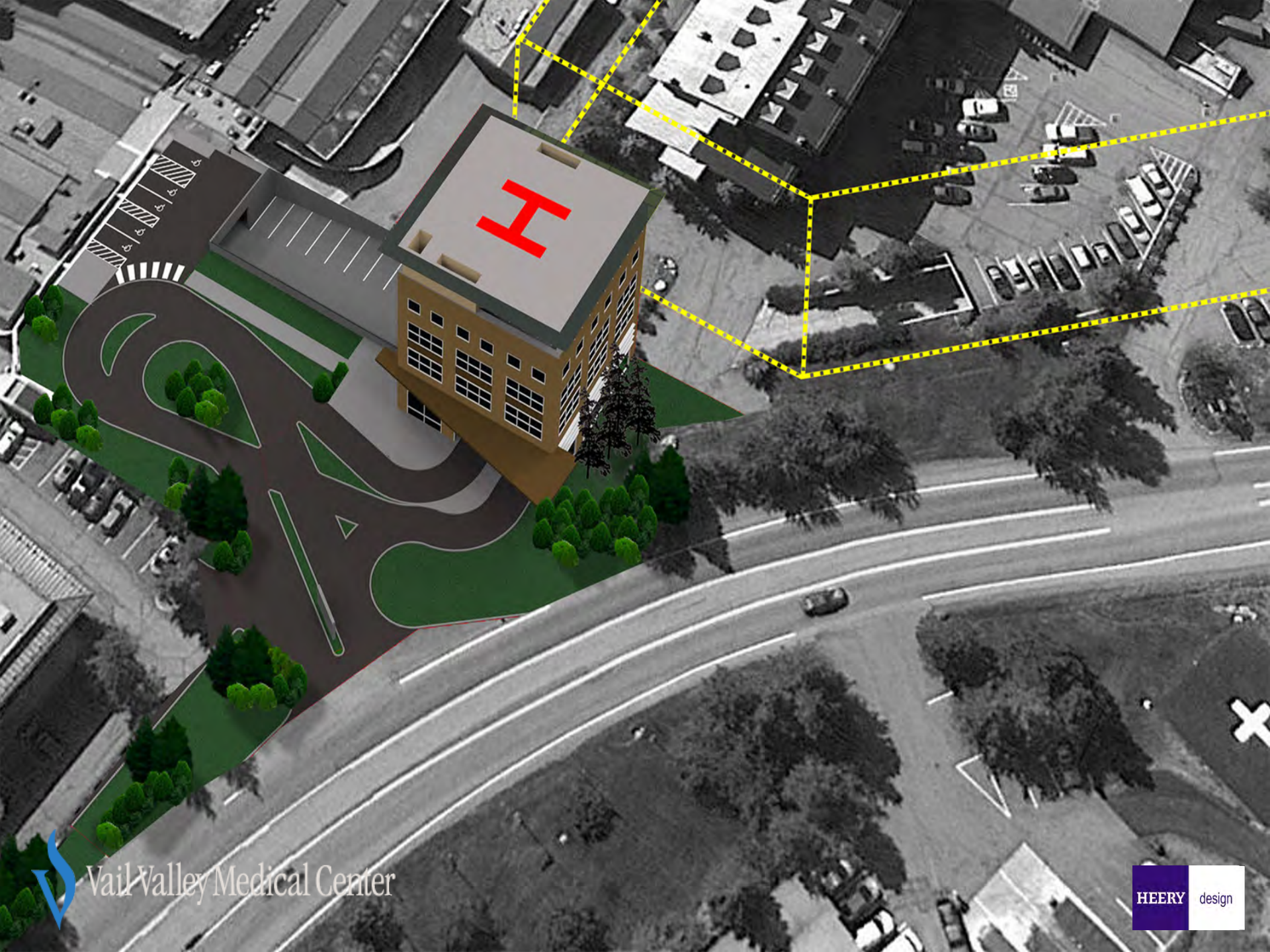
**Number of general public or civilian
deaths resulting from a medical
helicopter/heliport:**

0

***includes drivers being distracted by the helicopter.**



Vail Valley Medical Center

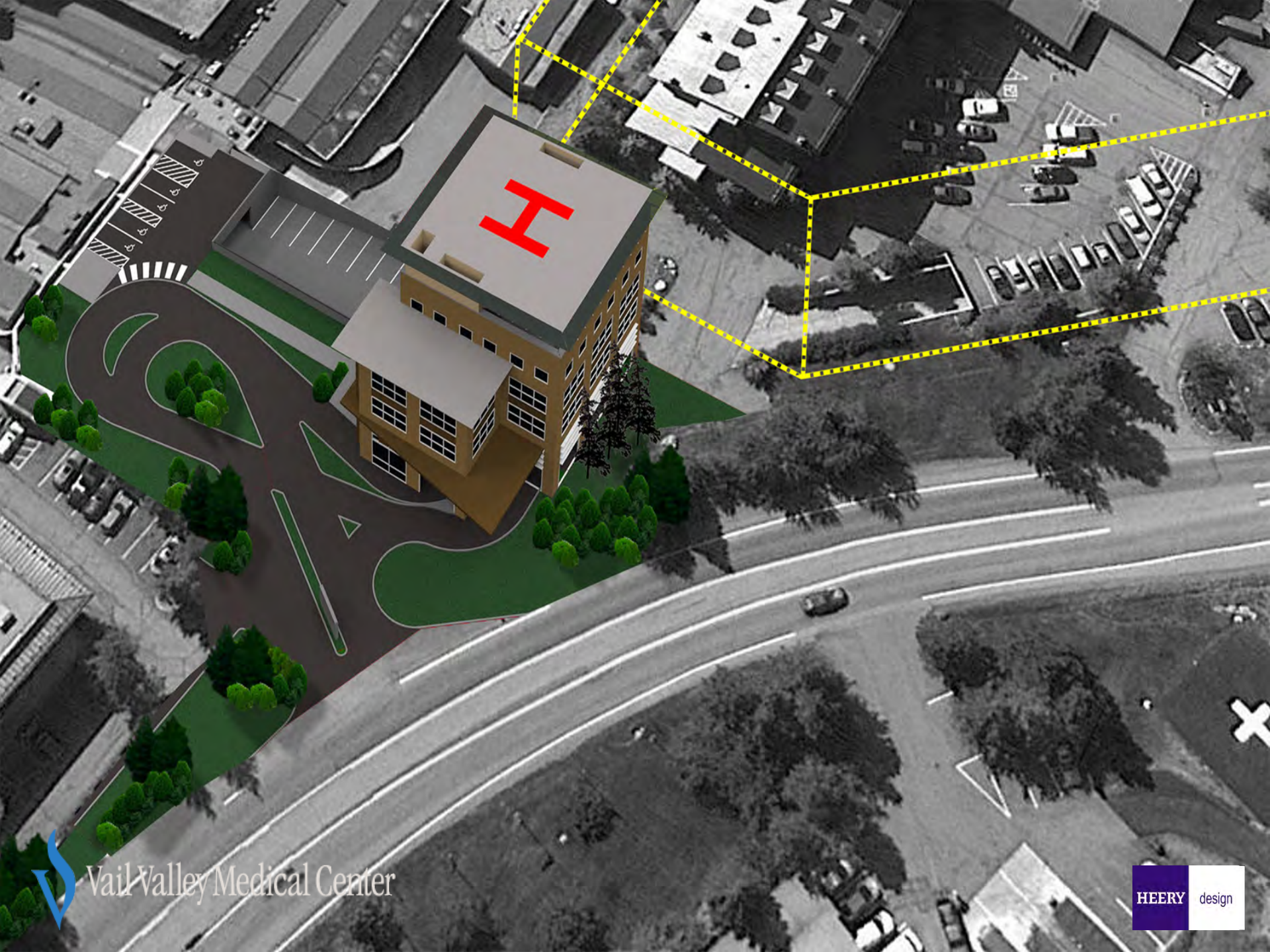


Vail Valley Medical Center

HEERY design





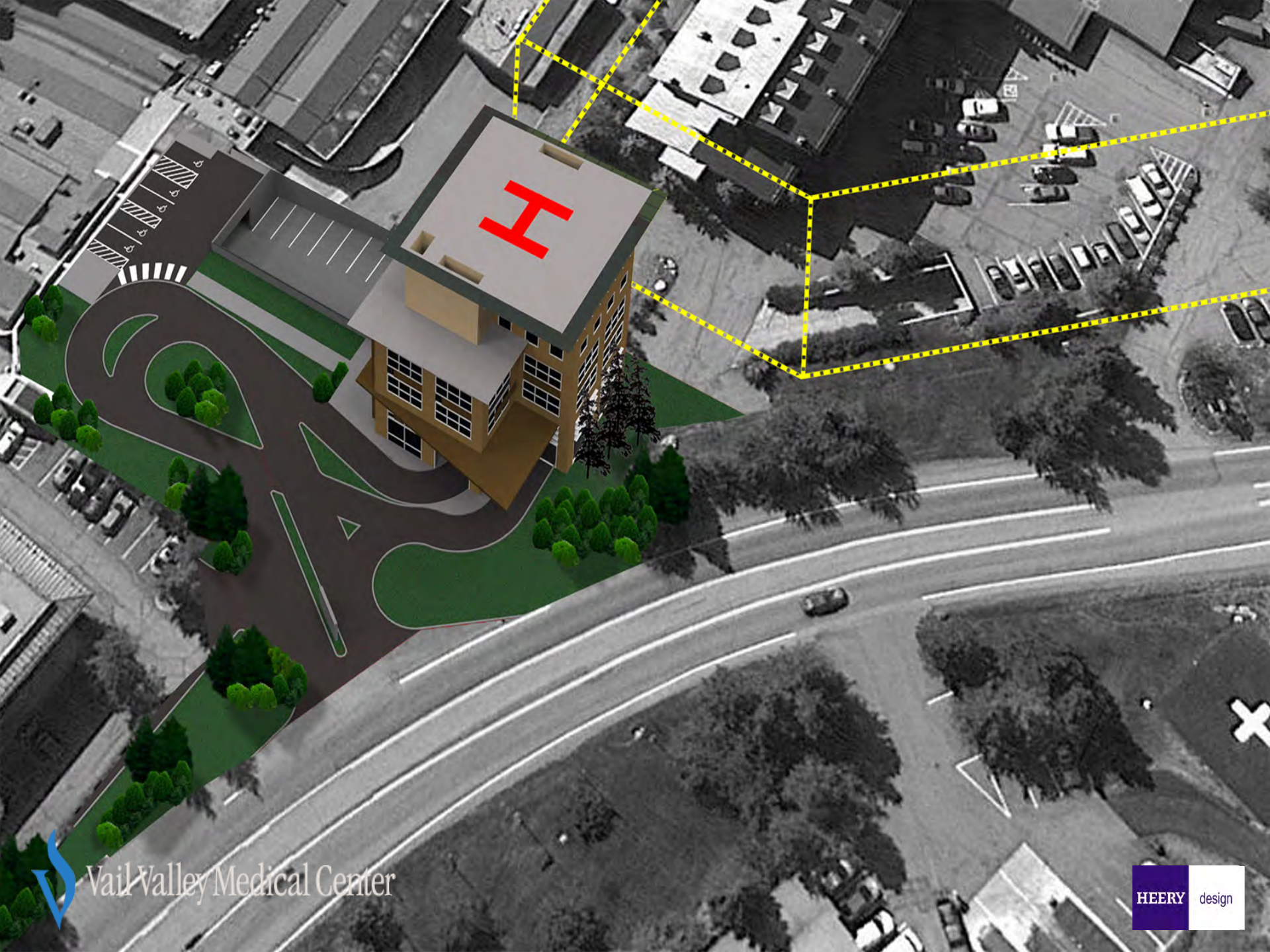


Vail Valley Medical Center

HEERY design







Vail Valley Medical Center

HEERY design







Vail Valley Medical Center

Heliport Site Selection & Review Process

- **Define selection criteria and develop short-list of potential heliport locations.**
- **Confirm the structural assumptions and relationship to building utilities; validate airspace clearances and aircraft performance capabilities.**
- **Select preferred heliport location.**
- **Propose heliport location as part of VVMC Master Plan, complete Town review process. Including approach to sound/safety issues and specific design considerations with city officials and adjacent properties.**
- **Produce conceptual design in respect to FAA, NFPA and building codes – verify all obstacles including future buildings on and off campus.**
- **Informational meeting or Pilot Briefing Package to all users.**

Heliport Site Selection & Review Process

- **Make applications to FAA (FAA application can be made any time after the conceptual design is complete) and to the Town of Vail (Conditional Use Permit application).**
- **Obtain CUP approval from Town (to be conditional on FAA approval).**
- **Obtain building permit approvals from Town of Vail for construction.**
- **Construct heliport.**
- **Progress and initial training at 85% completion of construction.**
- **Finish heliport, final inspections, FAA and Code signoffs.**
- **Commission pad, conduct final training & issue FAA and Pilot Briefing information.**



Vail Valley Medical Center